



*Staphylea*  
100

100  
10-10-1912

100  
10-10-1912

100  
10-10-1912

100  
10-10-1912

100  
10-10-1912

100  
10-10-1912

100  
10-10-1912

100  
10-10-1912

100  
10-10-1912

100  
10-10-1912

100  
10-10-1912

100  
10-10-1912

100  
10-10-1912

100  
10-10-1912

100  
10-10-1912

100  
10-10-1912

100  
10-10-1912

100  
10-10-1912

100  
10-10-1912

100  
10-10-1912

100  
10-10-1912

100  
10-10-1912

100  
10-10-1912

100  
10-10-1912

THINIDAE

100  
10-10-1912

100  
10-10-1912

100  
10-10-1912

100  
10-10-1912

100  
10-10-1912

100  
10-10-1912

100  
10-10-1912

100  
10-10-1912

100  
10-10-1912

100  
10-10-1912

100  
10-10-1912

100  
10-10-1912

100  
10-10-1912

100  
10-10-1912

100  
10-10-1912

100  
10-10-1912

100  
10-10-1912

100  
10-10-1912

100  
10-10-1912

100  
10-10-1912

100  
10-10-1912

100  
10-10-1912

100  
10-10-1912

100  
10-10-1912

100  
10-10-1912

100  
10-10-1912

100  
10-10-1912

100  
10-10-1912

100  
10-10-1912

100  
10-10-1912

100  
10-10-1912

100  
10-10-1912

100  
10-10-1912

100  
10-10-1912

100  
10-10-1912

100  
10-10-1912

100  
10-10-1912

100  
10-10-1912

100  
10-10-1912

100  
10-10-1912



SUP. C. HO

CICADIDAE



BELOSTOMATIDAE



EVULVATIDAE



APHIDAE



PSIIDAE

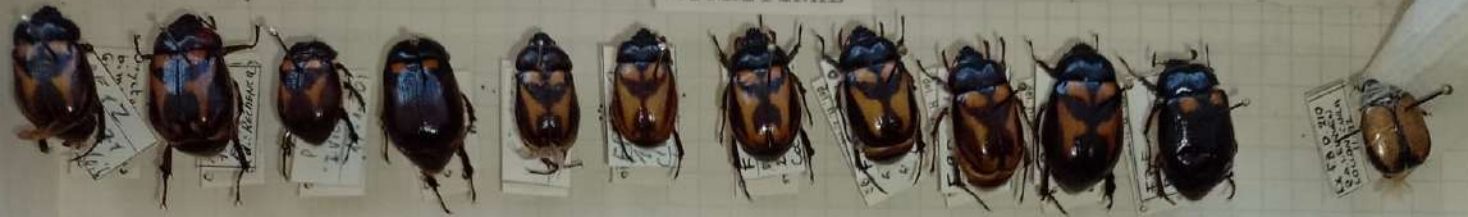


APHIDAE



FUNDACION BARRI

DYNASTINAE



TROGIDINAE

BOLEOPHTERINAE

RUTELINAE





FUNDACION PARILOCHE

LUCANIDAE

Scleroderma  
Lessw.  
Bog

Scleroderma  
Lessw.  
Bog

Scleroderma  
Lessw.  
Bog

Scleroderma  
Lessw.  
Bog

Scleroderma  
Lessw.  
Bog

Scleroderma  
Lessw.  
Bog

Scleroderma  
Lessw.  
Bog

Scleroderma  
Lessw.  
Bog

Scleroderma  
Lessw.  
Bog

Scleroderma  
Lessw.  
Bog

Scleroderma  
Lessw.  
Bog

Scleroderma  
Lessw.  
Bog

Scleroderma  
Lessw.  
Bog

Scleroderma  
Lessw.  
Bog

Scleroderma  
Lessw.  
Bog

Scleroderma  
Lessw.  
Bog

Scleroderma  
Lessw.  
Bog

PAPILIONOIDEA  
PIERIDAE  
TATACALIA  
THEOD. GE.  
(1893)  
DET. GENTILI, 1979



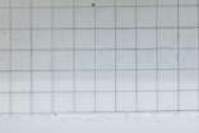
PAPILIONOIDEA  
PIERIDAE  
TATACALIA  
THEOD. GE.  
(1893)  
DET. GENTILI, 1979



PAPILIONOIDEA  
PIERIDAE  
TATACALIA  
THEOD. GE.  
(1893)  
DET. GENTILI, 1979



PAPILIONOIDEA  
LYCAENIDAE  
THECLA  
SCOT. FAUSTO  
TALINO (1871)  
DET. GENTILI, 1979



EXEMA  
DEVA (DRAK.)  
DET. GENTILI, 1979

FUNDACION

